

DO NOT SCALE FROM THIS PRINT

	-XX	-S, -D, -T	-S-RA	-D-RA	-T-RA
-01	C-15-1-X	N/A	N/A	N/A	N/A
-02	C-15-2-X	C-15-2-X	C-15-2-X	C-15-2-X	C-15-2-X
					C-15-3-X
					C-15-4-X
-03	C-15-3-X	C-15-3-X	C-15-3-X	C-15-3-X	N/A
					C-15-4-X
-04	C-15-4-X	C-15-4-X	N/A	N/A	
-21	C-60-1-X	N/A	N/A	N/A	N/A
-22	C-60-2-X	C-60-2-X	C-60-2-X	C-60-2-X	C-60-2-X
					C-60-3-X
					C-60-4-X
-23	C-60-3-X	C-60-3-X	C-60-3-X	C-60-3-X	N/A
					C-60-4-X
-24	C-60-4-X	C-60-4-X	N/A	N/A	

UNLESS OTHERWISE NOTED TOLERANCES ARE:

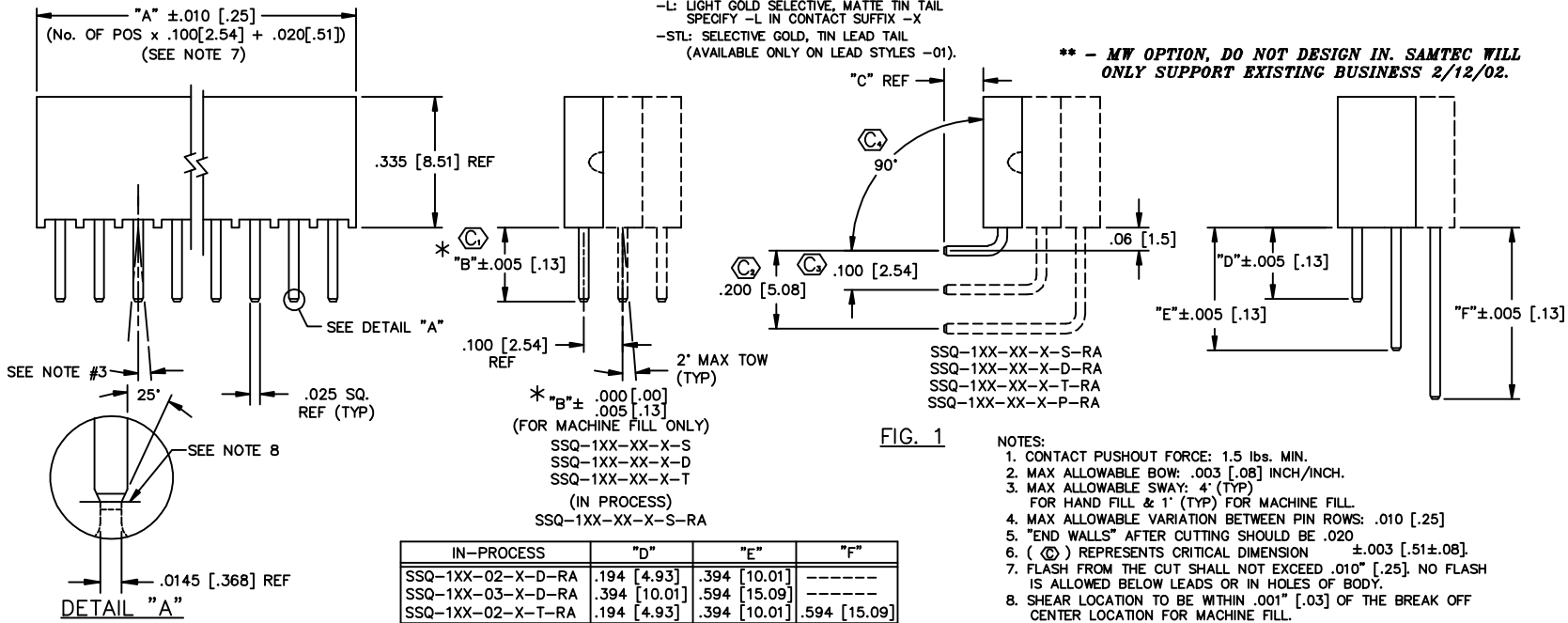
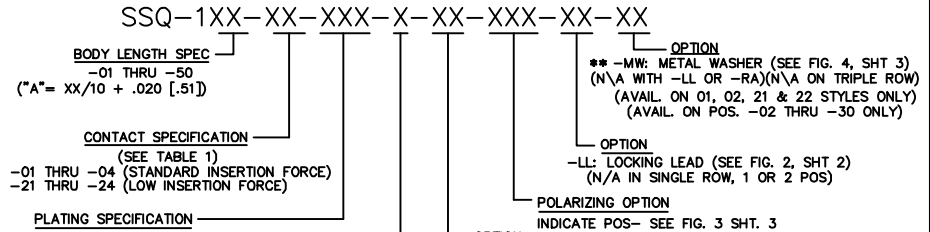
ONE PLACE DECIMALS ± THREE PLACE DECIMALS ± .005 [.13] ANGLES ± 2°

TWO PLACE DECIMALS ± .01 [.25] FOUR PLACE DECIMALS ±

TITLE: ASSEMBLY, SOCKET STRIP .025 [.64] SQ. TAIL

DWG NO: SSQ-1XX-XX-XXX-X-XX-XXX-XX-XX

SHEET 1 OF 3



- NOTES:
- CONTACT PUSHOUT FORCE: 1.5 lbs. MIN.
  - MAX ALLOWABLE BOW: .003 [.08] INCH/INCH.
  - MAX ALLOWABLE SWAY: 4' (TYP) FOR HAND FILL & 1' (TYP) FOR MACHINE FILL.
  - MAX ALLOWABLE VARIATION BETWEEN PIN ROWS: .010 [.25]
  - "END WALLS" AFTER CUTTING SHOULD BE .020
  - (⊙) REPRESENTS CRITICAL DIMENSION ±.003 [.51±.08]
  - FLASH FROM THE CUT SHALL NOT EXCEED .010" [.25]. NO FLASH IS ALLOWED BELOW LEADS OR IN HOLES OF BODY.
  - SHEAR LOCATION TO BE WITHIN .001" [.03] OF THE BREAK OFF CENTER LOCATION FOR MACHINE FILL.
  - NOTCH ON -P-RA OPTION TO BE ORIENTED AS SHOWN.

	IN-PROCESS	"D"	"E"	"F"
SSQ-1XX-02-X-D-RA	.194 [4.93]	.394 [10.01]	-----	-----
SSQ-1XX-03-X-D-RA	.394 [10.01]	.594 [15.09]	-----	-----
SSQ-1XX-02-X-T-RA	.194 [4.93]	.394 [10.01]	.594 [15.09]	

CONTACT	"B"		"C" REF		
	-S(-RA), -D, -T	-S-RA	-D-RA	-T-RA	
-01, -21	.104 [2.64]	N/A	N/A	N/A	
-02, -22	.194 [4.93]	.100 [2.54]	.100 [2.54]	.100 [2.54]	
-03, -23	.394 [10.01]	.300 [7.62]	.300 [7.62]	N/A	
-04, -24	.584 [14.83]	.490 [12.45]	N/A	N/A	

**PROPRIETARY NOTE**  
THIS DOCUMENT CONTAINS INFORMATION CONFIDENTIAL AND PROPRIETARY TO SAMTEC INC. AND SHALL NOT BE REPRODUCED OR TRANSMITTED IN ANY FORM OR BY ANY MEANS, ELECTRONIC OR MECHANICAL, INCLUDING PHOTOCOPYING, RECORDING, OR BY ANY INFORMATION STORAGE AND RETRIEVAL SYSTEM, WITHOUT THE EXPRESS WRITTEN CONSENT OF SAMTEC INC.

MATERIAL:  
INSULATOR:  
PRIMARY MATERIAL: LCP  
COLOR: BLACK

TERMINAL:  
PHOSPHOR BRONZE

EXISPROD\ASSEMBLY\100  
SSQ-ASM

**samtec**

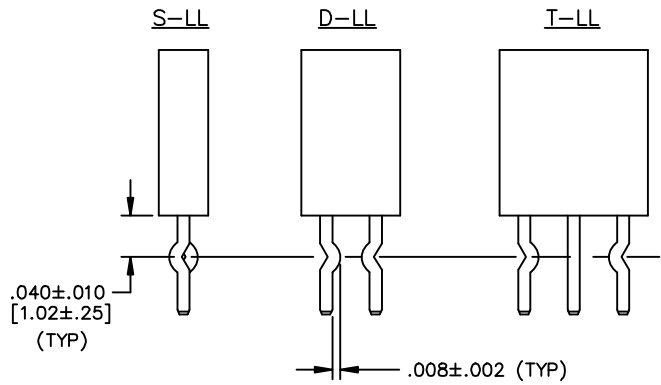
520 PARK EAST BLVD. NEW ALBANY, INDIANA 47150  
PHONE (812) 944-6733 P.O. BOX 1147  
CODE 55322

MADE BY: PURVIS 6-12-87

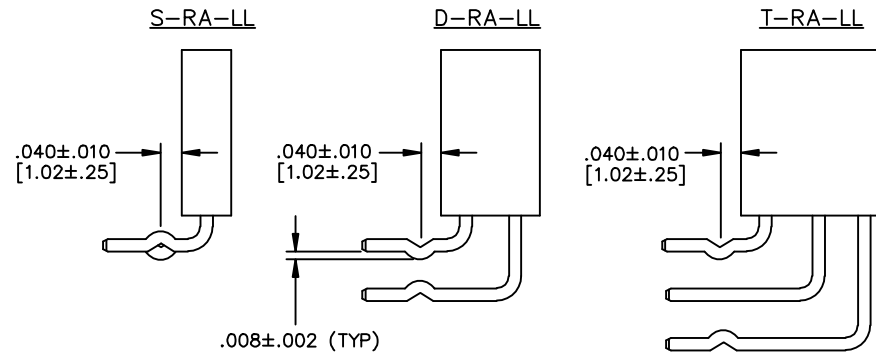
SSQ-1XX-XX-XXX-X-XX-XXX-XX-XX  
SHEET 1 OF 3

-LL: LOCKING LEAD OPTION

DIMENSIONS ARE IN INCHES		UNLESS OTHERWISE NOTED	TOLERANCES ARE:	TITLE: ASSEMBLY, SOCKET STRIP .025 [.64] SQ. TAIL	DWG NO: SSQ-1XX-XX-XXX-X-XX-XXX-XX-XX
ONE PLACE DECIMALS ±	TWO PLACE DECIMALS ±	THREE PLACE DECIMALS ± .010 [.25]	FOUR PLACE DECIMALS ± .0050 [.127]	ANGLES ± 2°	SHEET 2 OF 3

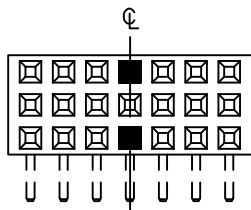


STRAIGHT VERSION

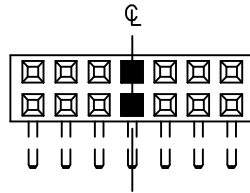


RIGHT ANGLE VERSION

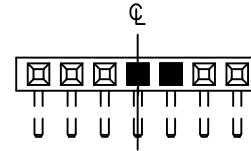
CRIMP LOCATION  
(STRAIGHT & RA VERSIONS)



TRIPLES:

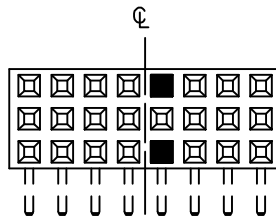


DOUBLES:

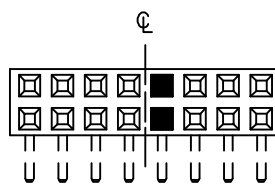


SINGLES:

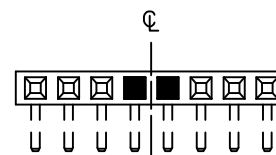
■ = CRIMP LOCATION  
ODD POSITIONS



TRIPLES:



DOUBLES:



SINGLES:

■ = CRIMP LOCATION  
EVEN POSITIONS

**PROPRIETARY NOTE**  
THIS DOCUMENT CONTAINS INFORMATION CONFIDENTIAL AND PROPRIETARY TO SAMTEC INC. AND SHALL NOT BE REPRODUCED OR TRANSFERRED TO OTHER DOCUMENTS OR DISCLOSED TO OTHERS OR USED FOR ANY PURPOSE OTHER THAN THAT FOR WHICH IT WAS OBTAINED WITHOUT THE EXPRESSED WRITTEN CONSENT OF SAMTEC INC.

PLOT SCALE: 1 = .2

**samtec**

520 PARK EAST BLVD. NEW ALBANY, INDIANA 47150  
PHONE (812) 944-6733 P.O. BOX 1147  
CODE 55322

MADE BY: PURVIS 6-12-87

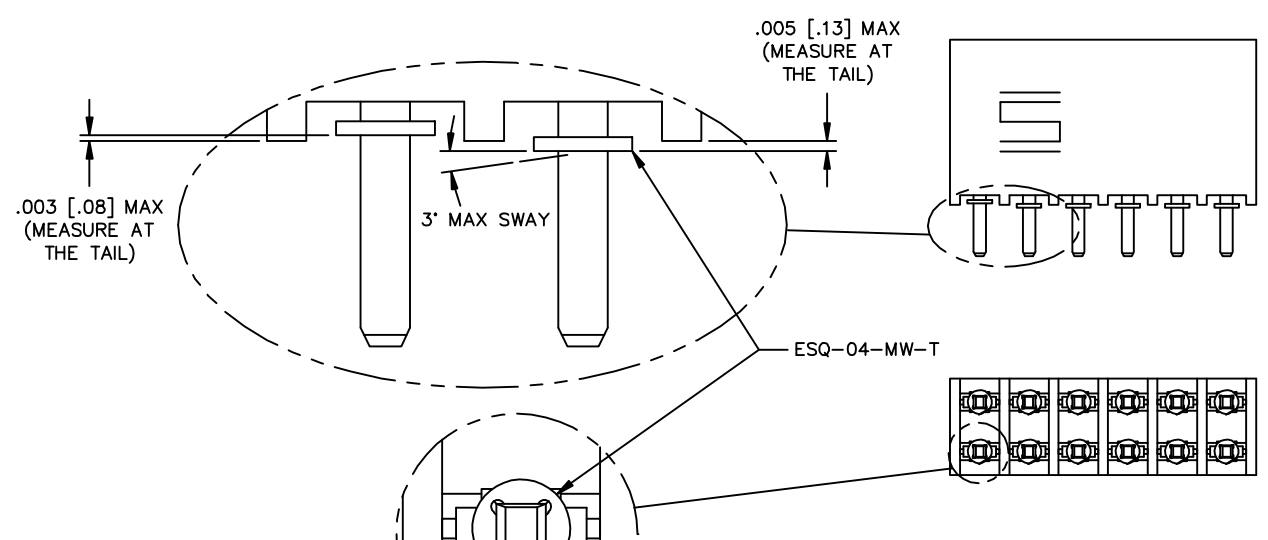
EXISPROD\ASSEMBLY\100  
SSQ-ASM2

SSQ-1XX-XX-XXX-X-XX-XXX-XX-XX  
SHEET 2 OF 3

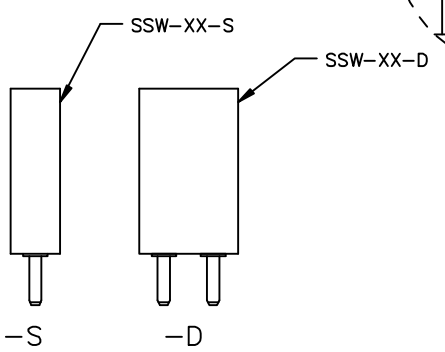
DIMENSIONS ARE IN INCHES		UNLESS OTHERWISE NOTED		TOLERANCES ARE:	
ONE PLACE DECIMALS ±	THREE PLACE DECIMALS ± .010 [.25]	ANGLES	± 2°		
TWO PLACE DECIMALS ±	FOUR PLACE DECIMALS ± .0050 [.127]				

TITLE: ASSEMBLY,  
SOCKET STRIP  
.025 [.64] SQ. TAIL

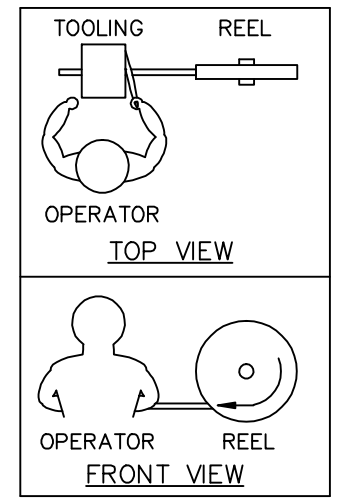
DWG NO:  
SSQ-1XX-XX-XXX-X-XX-XXX-XX-XX  
SHEET 3 OF 3



**FIG. 4**  
**\*\* -MW: METAL WASHER**  
**(ONE PER POSITION)**  
**(N/A ON -LL OR -RA OPTION)**  
**(N/A ON TRIPLE ROW)**  
**(STYLES -01, -02, -21 AND -22 ONLY)**  
**(AVAILABLE ON POS. -02 THRU -30 ONLY)**

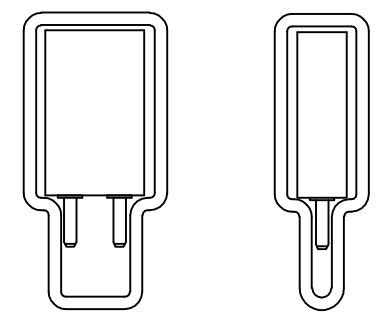


**\*\* - MW OPTION, DO NOT DESIGN IN. SAMTEC WILL ONLY SUPPORT EXISTING BUSINESS 2/12/02.**

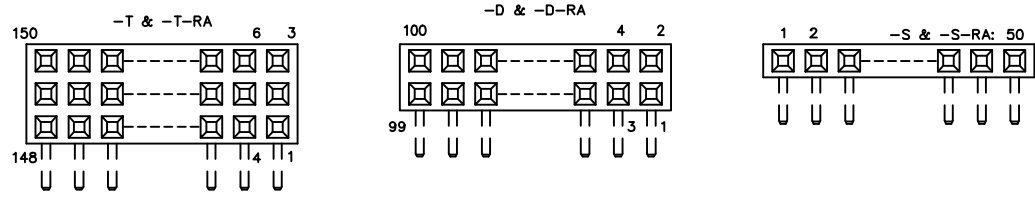


**WASHER REEL ASSEMBLY ORIENTATION VIEW**

FOR MEDAL WASHER OPTION ONLY  
 USE TUBE- PT-1-24-02-53 FOR DOUBLE  
 USE TUBE- PT-1-24-01-53 FOR SINGLE



PLOT SCALE: 1 = .2



**FIG. 3**  
**POLARIZATION LOCATION**  
 INSERT PK-06-N INTO SPECIFIED POS  
 AND BREAK OFF TAB

**PROPRIETARY NOTE**  
 THIS DOCUMENT CONTAINS INFORMATION CONFIDENTIAL AND PROPRIETARY TO SAMTEC INC. AND SHALL NOT BE REPRODUCED OR TRANSMITTED TO OTHER DOCUMENTS OR DISCLOSED TO OTHERS OR USED FOR ANY PURPOSE OTHER THAN THAT FOR WHICH IT WAS OBTAINED WITHOUT THE EXPRESSED WRITTEN CONSENT OF SAMTEC INC.

EXISPROD\ASSEMBLY\100  
SSQ-ASM3

**samtec**  
 520 PARK EAST BLVD. NEW ALBANY, INDIANA 47150  
 PHONE (812) 944-6733 P.O. BOX 1147  
 CODE 55322

MADE BY: PURVIS 6-12-87

SSQ-1XX-XX-XXX-X-XX-XXX-XX-XX  
 SHEET 3 OF 3