

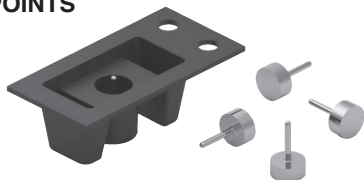
Test Points and Terminals

RoHS Compliant This page of product is RoHS compliant.



SMT PINS/TEST POINTS

- Plating: 10µ" Gold over Nickel
- Tail/Pin Diameter: .018in. (.46mm)



Loose Piece

MOUSER STOCK NO.	Mill-Max Part No.	Price Each			
		1	10	100	200
575-150800015000030	1508-0-00-15-00-00-03-0	.14	.13	.124	.119

Reel

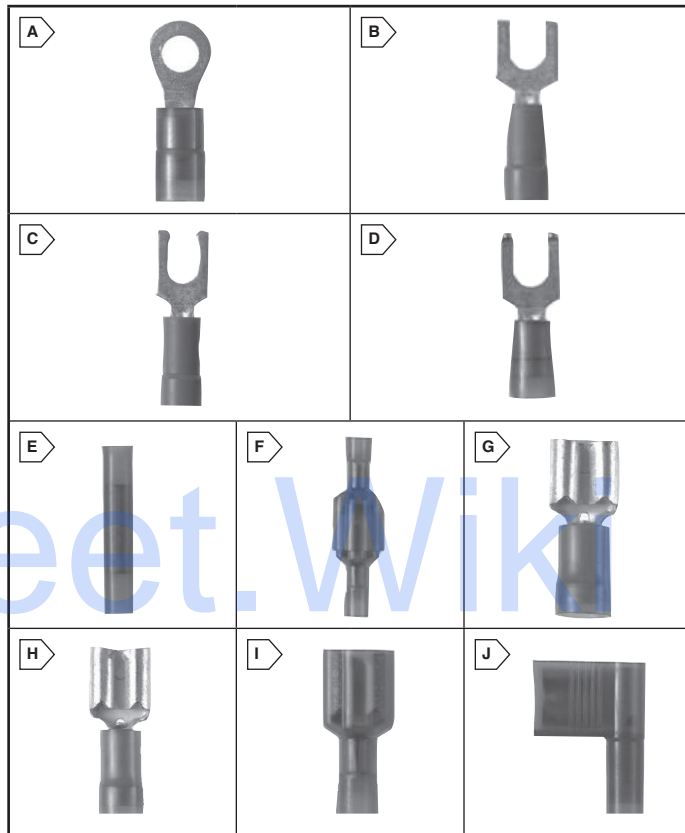
MOUSER STOCK NO.	Mill-Max Part No.	Reel Qty.	Price
			Per Piece
575-150805715000030	1508-0-57-15-00-00-03-0	1600	.62

SOLDERLESS TERMINALS

- Price each is per terminal
- All terminals feature brazed seam construction

Stock No. Suffix Denotes Standard Package Quantity:
L = 50, C = 100, D = 500, M = 1000

MOUSER STOCK NO.	Fig.	Wire Size	Stud Size	Color	Price Each			
					1	100	500	1000
Vinyl Ring - Funnel Entry - Insulated								
644-PV18-6R-MY	A	22-18	6	Red	.84	.692	.524	.345
644-PV18-8R-MY	A	22-18	8	Red	.33	.301	.267	.245
644-PV18-4RX-MY	A	22-18	4	Red	.32	.29	.26	.22
644-PV18-6RX-MY	A	22-18	6	Red	.30	.245	.223	.212
644-PV18-8RX-MY	A	22-18	8	Red	.33	.301	.268	.245
644-PV18-10RX-MY	A	22-18	10	Red	.31	.278	.256	.222
644-PV14-6R-M	A	16-14	6	Blue	.25	.233	.212	.189
644-PV14-8R-M	A	16-14	8	Blue	.32	.289	.268	.233
644-PV14-10R-M	A	16-14	10	Blue	.31	.279	.248	.217
644-PV14-14R-M	A	16-14	1/4	Blue	.44	.401	.357	.324
644-PV14-4RX-C	A	16-14	4	Blue	1.00	.916	.823	.743
644-PV14-6RX-M	A	16-14	6	Blue	.28	.258	.227	.196
644-PV14-8RX-M	A	16-14	8	Blue	.28	.258	.238	.207
644-PV14-10RX-M	A	16-14	10	Blue	.31	.279	.256	.223
644-PV14-14RX-M	A	16-14	1/4	Blue	.42	.379	.345	.312
644-PV10-8R-D	A	12-10	8	Yellow	.44	.405	.369	.347
644-PV10-10R-D	A	12-10	10	Yellow	.49	.445	.393	.341
644-PV10-14R-D	A	12-10	1/4	Yellow	.48	.447	.401	.356
644-PV10-6RX-L	A	12-10	6	Yellow	1.23	1.00	.904	.682
644-PV10-8RX-L	A	12-10	8	Yellow	1.30	1.05	.952	.717
644-PV10-10RX-L	A	12-10	10	Yellow	1.12	.95	.871	.748
644-PV10-14RX-L	A	12-10	1/4	Yellow	1.36	1.07	.838	.815
Nylon Ring - Insulated								
644-PN18-14R-M	A	22-18	1/4	Red	.55	.491	.447	.401
644-PN18-4R-M	A	22-18	4	Red	.45	.423	.389	.356
644-PN18-10R-M	A	22-18	10	Red	1.27	.713	.501	.389
644-PN18-4RN-M	A	22-18	4	Red	.42	.389	.344	.311
644-PN18-6RN-M	A	22-18	6	Red	.43	.391	.345	.323
644-PN18-8R-M	A	22-18	8	Red	.43	.391	.345	.312
644-PN14-4R-M	A	16-14	4	Blue	.44	.401	.357	.323
644-PN14-56R-M	A	16-14	5/16	Blue	.53	.491	.435	.391
644-PN14-6R-M	A	16-14	6	Blue	.43	.40	.356	.323
644-PN14-8R-M	A	16-14	8	Blue	.42	.389	.344	.311
644-PN14-6RX-C	A	16-14	6	Blue	1.64	1.48	1.32	1.15
644-PN14-8RX-C	A	16-14	8	Blue	1.38	1.07	.871	.804
644-PN14-10RX-C	A	16-14	10	Blue	1.50	1.17	.938	.916
644-PN10-6R-D	A	12-10	6	Yellow	.53	.498	.44	.394
644-PN10-8R-L	A	12-10	8	Yellow	1.54	1.39	1.24	1.11
644-PN10-14R-L	A	12-10	1/4	Yellow	1.46	1.32	1.19	1.06
644-PN10-6RX-L	A	12-10	6	Yellow	2.11	1.62	1.29	1.16
644-PN10-8RX-L	A	12-10	8	Yellow	1.99	1.58	1.24	1.17
644-PN10-10RX-L	A	12-10	10	Yellow	1.97	1.57	1.23	1.13
644-PN10-56R-D	A	12-10	5/16	Yellow	.56	.513	.457	.412
644-PN10-38R-D	A	12-10	3/8	Yellow	.48	.435	.39	.357
Vinyl Fork - Insulated								
644-PV18-6F-MY	B	22-18	6	Red	.33	.279	.245	.223
644-PV18-8F-MY	B	22-18	8	Red	.33	.278	.245	.212
644-PV18-6FX-MY	B	22-18	6	Red	.30	.268	.245	.223
644-PV18-6FN-MY	B	22-18	6	Red	.27	.245	.212	.189
644-PV18-8FX-MY	B	22-18	8	Red	.30	.268	.245	.212
644-PV18-10F-MY	B	22-18	10	Red	.36	.336	.301	.254
644-PV14-8F-M	B	16-14	8	Blue	.31	.278	.245	.212
644-PV14-10F-M	B	16-14	10	Blue	.78	.659	.514	.412
644-PV14-6FX-M	B	16-14	6	Blue	.25	.219	.214	.208
644-PV14-6FN-M	B	16-14	6	Blue	.25	.233	.212	.189
644-PV14-8FX-M	B	16-14	8	Blue	.31	.279	.245	.212
644-PV14-10FX-M	B	16-14	10	Blue	.32	.288	.254	.243
644-PV14-14F-M	B	16-14	1/4	Blue	.37	.334	.301	.268
644-PV10-6F-D	B	12-10	6	Yellow	.45	.406	.37	.336
644-PV10-10F-D	B	12-10	10	Yellow	.66	.614	.544	.497
644-PV10-14F-D	B	12-10	1/4	Yellow	.50	.457	.412	.368
644-PV10-14FX-L	B	12-10	1/4	Yellow	1.36	1.07	.882	.789
Nylon Fork Insulated								
644-PNF18-6F-M	B	22-18	6	Red	.49	.465	.393	.362
644-PNF18-8F-M	B	22-18	8	Red	.50	.484	.408	.376
644-PNF18-10F-M	B	22-18	10	Red	.50	.484	.408	.376
644-PNF14-6F-M	B	16-14	6	Blue	.50	.462	.419	.376
644-PNF14-8F-M	B	16-14	8	Blue	.46	.434	.393	.362
644-PNF14-10F-M	B	16-14	10	Blue	.50	.462	.419	.376
644-PNF10-10F-L	B	12-10	10	Yellow	1.60	1.25	1.00	.947
Vinyl Locking Fork								
644-PV18-6LF-MY	C	22-18	6	Red	.74	.641	.496	.32



MOUSER STOCK NO.	Fig.	Wire Size	Stud Size	Color	Price Each			
					1	100	500	1000
Nylon Locking Fork								
644-PN18-8LF-M	C	22-18	8	Red	.54	.476	.417	.383
644-PN14-6LF-M	C	16-14	6	Blue	.46	.428	.382	.346
644-PN14-8LF-M	C	16-14	8	Blue	1.34	1.07	.871	.39
644-PN14-10LF-M	C	16-14	10	Blue	.44	.401	.357	.312
Vinyl Flanged Fork								
644-PN18-6LF-M	D	22-18	6	Red	.53	.491	.435	.39
644-PN18-8FF-M	D	22-18	8	Red	.52	.468	.424	.379
644-PN18-10FF-M	D	22-18	10	Red	.60	.556	.498	.452
644-PN14-6FF-M	D	16-14	6	Blue	.66	.603	.536	.48
Vinyl Flanged Fork								
644-PN14-8FF-M	D	16-14	8	Blue	.55	.502	.446	.401
Vinyl Butt Splice								
644-BSV18X-MY	E	22-18	---	Red	.45	.394	.37	.347
644-BSV14X-M	E	16-14	---	Blue	.39	.368	.345	.324
644-BSV10X-D	E	12-10	---	Yellow	.60	.544	.509	.462
Nylon Butt Splice								
644-BSN14-M	E	16-14	---	Blue	.43	.40	.356	.333
Disconnect (Male)								
644-DNF18-250FIM-M	F	22-18	.250x.032	Red	.63	.569	.513	.468
644-DNF18-250FIM-L	F	22-18	.250x.032	Red	1.28	1.15	1.03	.935
644-DNF14-250M-M	G	16-14	.250x.032	Blue	.69	.624	.56	.507
644-DV14-250MB-M	G	16-14	.250x.032	Blue	.60	.557	.499	.463
644-DNF10-250M-D	G	12-10	.250x.032	Yellow	.67	.60	.538	.486
Disconnect (Female)								
644-DNF18-110-M	H	22-18	.110x.032	Red	.85	.777	.695	.637
644-DNF18-187-M	H	22-18	.187x.032	Red	.64	.58	.513	.468
644-DNF18-250-M	H	22-18	.250x.032	Red	.61	.536	.491	.468
644-DNF18-250FIB-M	I	22-18	.250x.032	Red	.72	.647	.58	.524
644-DNF14-110-M	H	16-14	.110x.032	Blue	.52	.48	.424	.379
644-DNF14-187-M	H	16-14	.187x.032	Blue	.47	.428	.394	.359
644-DNF14-250-M	H	16-14	.250x.032	Blue	1.27	.983	.771	.345
644-DV14-250B-M	H	16-14	.250x.032	Blue	.52	.468	.424	.379
644-DNF14-250FIB-M	I	16-14	.250x.032	Blue	1.15	.961	.826	.391
644-DNF10-250FI-D	I	12-10	.250x.032	Yellow	.68	.625	.558	.502
Right Angle Disconnect (Female) Tab Width								
644-DNRF14-250B-M	J	16-14	.250x.032	Blue	.57	.513	.491	.468

Terminals